



# **MOBIFLEX<sup>®</sup> 100-NF**

PORTABLE WELDING EXHAUST SYSTEM



**LINCOLN<sup>®</sup>**  
**ELECTRIC**

# **MOBIFLEX® 100-NF**

**PORTABLE WELDING EXHAUST SYSTEM**

## **THE MOBIFLEX® 100-NF IS A PORTABLE AND LIGHTWEIGHT WELDING FUME EXHAUST UNIT.**

It is ideal for construction or shop welding applications where removing welding fumes from the source is needed without filtration.

The Mobiflex 100-NF comes standard with a carrying handle and sturdy base which makes it easy to move around the job site. Weighing only 37.5 lbs. (17 kg) this unit can go anywhere the job is required.

## **FEATURES:**

- ▶ **Weights only 37.5 lbs. (17 kg)** - Aids in portability.
- ▶ **Handle** - Allows for easy positioning around the job shop.
- ▶ **69 dBA** - Offers low noise operation.
- ▶ **Hood Magnet** - Ensures secure placement of Hose & Hood Set.
- ▶ **Airflow** - Up to 765 CFM depending on length of hose(s) used.
- ▶ **Maximum Reach Distance** - 32 ft. (9.7 m) using K1668-1 and K1668-2.

## **THE MOBIFLEX® 100-NF IS IDEAL FOR:**

- ▶ **Construction welding applications**
- ▶ **Shop welding applications**





## MOBIFLEX® 100-NF TECHNICAL DATA:

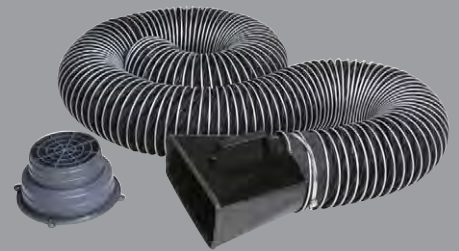
- ▶ **Airflow:** Up to 765 CFM depending on length of hose(s) used.
- ▶ **Input Power (Voltage/Phase/Hertz):**  
115/1/50/60
- ▶ **Input Current:** 10A
- ▶ **Dimensions - H x W x D:**  
23.1 x 18.9 x 18.9 in.  
(587 x 480 x 480 mm)
- ▶ **Weight:** 37.5 lbs. (17 kg)
- ▶ **Processes:**  
Stick, TIG, MIG, Flux-Cored
- ▶ **Product Number:** K1666-1



## REQUIRED OPTIONS

### Hose and Hood Set

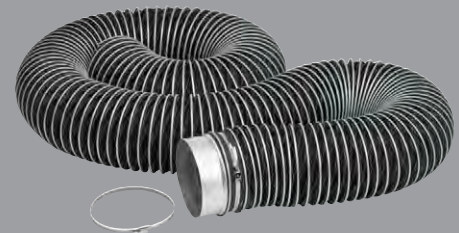
Completely flexible extraction hose with magnetic hood. Ideal for those hard to access fume extraction applications. Hose is reinforced with outside steel rings to protect against wear and crushing. Diameter of hose is 146 mm (5.75 in.), length is 5 m (16.4 ft.). Includes one clamp.



*Order K1668-1*

### Exhaust or Extension Hose Set

Use as exhaust hose for Mobiflex 100-NF or to extend K1668-1. Hose is reinforced with outside steel rings to protect against wear and crushing. Diameter of hose is 146 mm (5.75 in.), length is 5 m (16.4 ft.). Includes two clamps.



*Order K1668-2*

## BENEFITS OF THE MOBIFLEX® 100-NF:

- ▶ **Cleaner Work Environment** - Reduces fumes and particulate in the operation and near surrounding work area.
- ▶ **Low Maintenance** - Quick disassembly for cleaning and maintenance.
- ▶ **Light Weight** - Ease of portability and placement in work areas.
- ▶ **Low Noise Level** - Will not contribute to increased noise levels.

### CUSTOMER ASSISTANCE POLICY

The business of The Lincoln Electric Company is manufacturing and selling high quality welding equipment, consumables, and cutting equipment. Our challenge is to meet the needs of our customers and to exceed their expectations. On occasion, purchasers may ask Lincoln Electric for information or advice about their use of our products. Our employees respond to inquiries to the best of their ability based on information provided to them by the customers and the knowledge they may have concerning the application. Our employees, however, are not in a position to verify the information provided or to evaluate the engineering requirements for the particular weldment. Accordingly, Lincoln Electric does not warrant or guarantee or assume any liability with respect to such information or advice. Moreover, the provision of such information or advice does not create, expand, or alter any warranty on our products. Any express or implied warranty that might arise from the information or advice, including any implied warranty of merchantability or any warranty of fitness for any customers' particular purpose is specifically disclaimed.

Lincoln Electric is a responsive manufacturer, but the selection and use of specific products sold by Lincoln Electric is solely within the control of, and remains the sole responsibility of the customer. Many variables beyond the control of Lincoln Electric affect the results obtained in applying these types of fabrication methods and service requirements.

Subject to Change – This information is accurate to the best of our knowledge at the time of printing. Please refer to [www.lincolnelectric.com](http://www.lincolnelectric.com) for any updated information.

The operation of welding fume control equipment is affected by various factors including proper use and positioning of the equipment, maintenance of the equipment and the specific welding procedure and application involved. Worker exposure level should be checked upon installation and periodically thereafter to be certain it is within applicable OSHA PEL and ACGIH TLV limits.



### The Lincoln Electric Company Automation Division

22221 Saint Clair Avenue  
Cleveland, Ohio 44117-2522 USA

(216) 383-2667

[WeldFumeControl@LincolnElectric.com](mailto:WeldFumeControl@LincolnElectric.com)  
[www.LincolnWeldFumeControl.com](http://www.LincolnWeldFumeControl.com)

[www.lincolnelectric.com/safety](http://www.lincolnelectric.com/safety)